

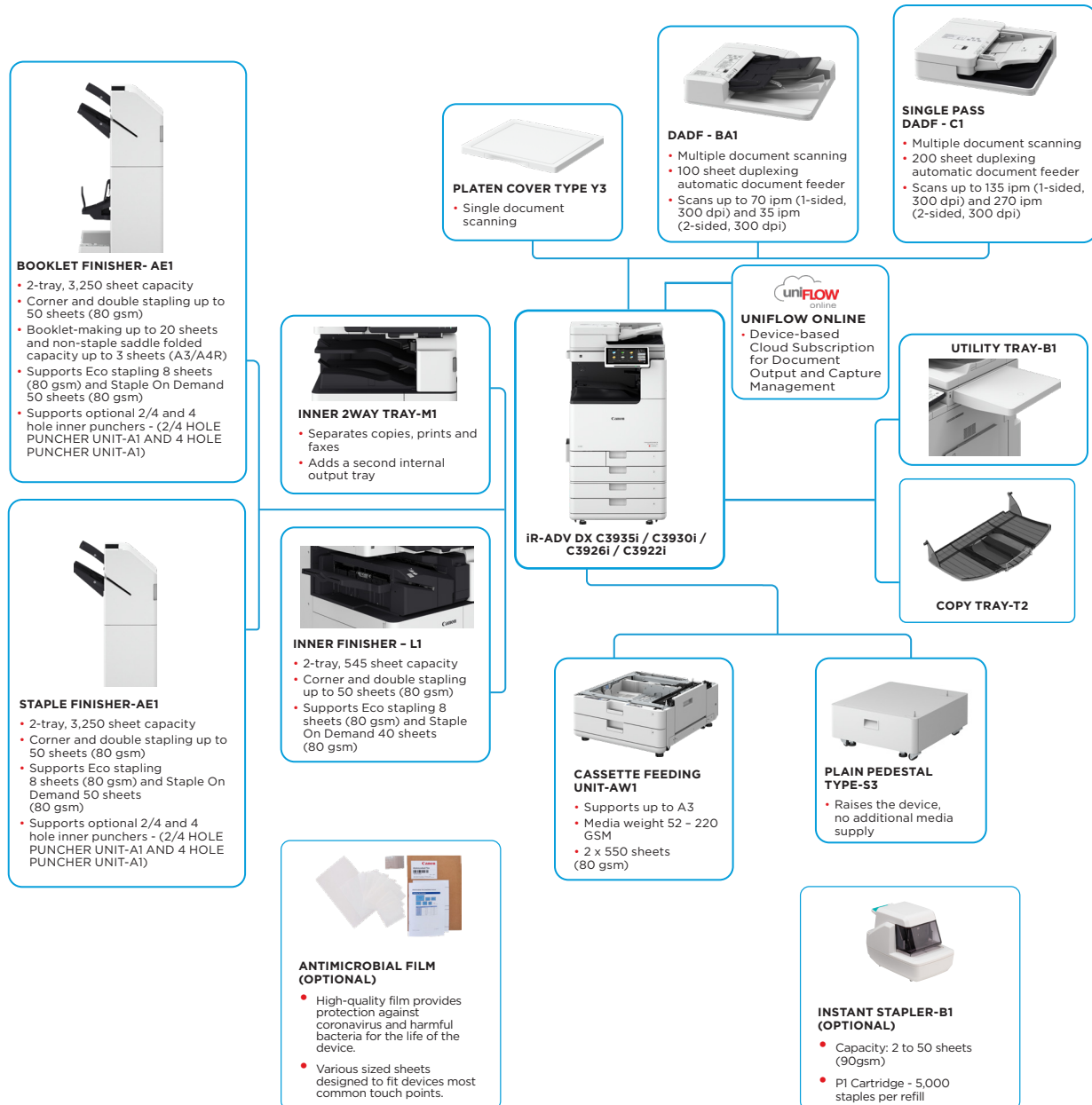
imageRUNNER ADVANCE DX C3900 Series

SMART COLOUR A3 MULTIFUNCTION DEVICES FOR EFFICIENT, HIGH-QUALITY DOCUMENT PROCESSING



Canon Europe Ltd.
EU 2003-2024 Most Reliable A3 Brand

MAIN CONFIGURATION OPTIONS



This flat configuration is for illustration purpose only. For a complete list of options and the exact compatibility relationships, please refer to the online [product configurator](#).

The Unified Firmware Platform (UFP) ensures that the latest feature upgrades and protection are available, for an enhanced user experience across the entire iR ADVANCE DX portfolio.



TECHNICAL SPECIFICATIONS

imageRUNNER ADVANCE DX C3900 Series

MAIN UNIT

Machine type	A3 Color Laser Multifunctional
Core functions	Print, Copy, Scan, Send, Store and Optional Fax
Processor	1.8GHz Dual Core Processor
Control Panel	10.1" TFT LCD WSVGA Color Touch panel
Memory	Standard: RAM 3.5GB Main CPU Side: 2GB Image Processing CPU Side: 1GB + 0.5GB (reserved for image processing)
Storage	Standard: (SSD) 256 GB Optional: (SSD) 1TB
Interface Connection	NETWORK Standard: 1000Base-T/100Base-TX/10Base-T, Optional: Wireless LAN (IEEE 802.11 b/g/n) OTHERS Standard: USB 2.0 (Host) x1, USB 3.0 (Host) x1, USB 2.0 (Device) x1; Optional: Serial Interface, Copy Control Interface
Paper Supply Capacity (A4, 80gsm)	Standard: 1200 sheets 100-sheet Multi-purpose tray 550-sheet Paper cassette x 2, Maximum: 2,300 sheets (with Cassette Feeding Unit-AW1)
Paper output capacity (A4, 80gsm)	Standard: 250 sheets Maximum: 3,450 sheets (with Staple Finisher-AE1 or Booklet Finisher-AE1 and Copy Tray-T2)
Finishing capabilities	Collate, Group, Offset, Staple, Saddle Stitch, Hole Punch, Eco Staple, Staple On Demand * Finishing capabilities vary depending on the options connected.
Supported media types	Multi-purpose tray: Thin, Plain, Heavy*, Recycled, Coated*, Color, Tracing, Bond, Transparency, Label, Pre-punched, Letterhead, Envelope * SRA3 is unsupported for Coated (257-300gsm) and Heavy (257-300gsm) paper. Upper Cassette: Thin, Plain, Heavy, Recycled, Color, Bond, Transparency, Pre-punched, Letterhead, Envelope Lower Cassette: Thin, Plain, Heavy, Recycled, Color, Bond, Transparency, Pre-punched, Letterhead, Envelope* * Envelope Feeder Attachment A (standard) is required.
Supported media sizes	Multi-purpose tray: Standard size: SRA3, A3, A4, A4R, A5, A5R, A6R, B4, B5, B5R Custom size: 98.4 x 139.7 mm to 320.0 x 457.2 mm Free size: 100.0 x 148.0 mm to 304.8 x 457.2 mm Envelopes: COM10 No.10, Monarch, ISO-C5, DL Envelope custom size: 98.0 x 98.0 mm to 320.0 x 457.2 mm Upper Cassette: Standard size: A4, A5, A5R, A6R, B5 Custom Size: 105.0 x 148.0 mm to 297.0 x 215.9 mm Envelopes: ISO-C5 Lower Cassette: Standard size: A3, A4, A4R, A5, A5R, A6R, B4, B5, B5R Custom Size: 105.0 x 148.0 mm to 304.8 x 457.2 mm Envelopes*: COM10 No.10, Monarch, DL * Envelope Attachment A (standard) is required.
Supported media weights	Multi-purpose tray: 52 to 300 gsm* * SRA3 is unsupported for Coated (257-300gsm) and Heavy (257-300gsm) paper. Upper/Lower Cassette: 52 to 256 gsm Duplex: 52 to 220 gsm
Warm-up Time	Quick Startup Mode: 4 seconds or less* * Time from device power-on to when the copy icon appears and is enabled to operate on the touch panel display. From Sleep Mode: 10 seconds or Less From Power On: 10 seconds or less* * Time from device power-on, until copy ready (not print reservation)
Dimensions (W x D x H)	With Platen Cover-Y3: 565 x 692 x 788 mm With Single Pass DADF-C1: 565 x 722 x 897 mm With DADF-BA1: 565 x 719 x 891 mm
Installation Space (W x D)	Basic: 978 x 1119 mm (with Single Pass DADF-C1 + right cover open + Multi-purpose tray extension extended + paper cassette open) 978 x 1116 mm (with DADF-BA1 + right cover open + Multi-purpose tray extension extended + Paper cassette open) Fully Configured: 1,651 x 1,119 mm (with Single Pass DADF-C1 + Staple Finisher-AE1/Booklet Finisher-AE1 + Copy Tray-T2 extension extended + paper cassette open) 1,651 x 1,116 mm (with DADF-BA1 + Staple Finisher-AE1/Booklet Finisher-AE1 + Copy Tray-T2 extension extended + paper cassette open)
Weight* *including toner	With Platen Cover-Y3: Approx. 71 kg With DADF-BA1: Approx. 78 kg With Single Pass DADF-C1: Approx. 84 kg
PRINT SPECIFICATIONS	
Print Speed (BW and CL)	iR-ADV DX C3935i: 1-sided: Up to 35 ppm (A4, A5, A5R, A6R), Up to 17 ppm (A3), Up to 23 ppm (A4R) iR-ADV DX C3930i: 1-sided: Up to 30 ppm (A4, A5, A5R, A6R), Up to 15 ppm (A3), Up to 20 ppm (A4R) iR-ADV DX C3926i: 1-sided: Up to 26 ppm (A4, A5, A5R, A6R), Up to 15 ppm (A3), Up to 20 ppm (A4R) iR-ADV DX C3922i: 1-sided: Up to 22 ppm (A4, A5, A5R, A6R), Up to 15 ppm (A3), Up to 20 ppm (A4R)
Print Resolution (dpi)	1,200 x 600, 1,200 x 1,200 (half-speed)

Page description languages

Direct Print (RUI)	Standard: UFR II, PCL6, Adobe® PostScript®3™ Supported file types: PDF, EPS, TIFF/JPEG, and XPS
Printing from mobile and cloud applications	AirPrint, Mopria, Universal Print by Microsoft, Canon PRINT Business app, and uniFLOW Online (optional) A range of software and MEAP-based solutions are available to provide printing from mobile devices or internet-connected devices and cloud-based services depending on your requirements. Please contact your sales representative for further information
OS Standard Printing	Android/Windows® 10/Windows® 11/Chrome OS/ macOS (11.2.2 or later), iOS (15.2 or later), iPadOS
Fonts	PS fonts: 136 Roman PCL fonts: 93 Roman, 10 Bitmap fonts, 2 OCR fonts, Andale Mono WT, J/K/S/T™ (Japanese, Korean, Simplified and Traditional Chinese), Barcode fonts*2 *1 Optional PCL International Font Set-A1 is required. *2 Optional Barcode Printing Kit-D1 is required.
Print Features	Secured Print, Secure Watermark, Header/Footer, Page Layout, Two-sided Printing, Mixed Paper Sizes/Orientations, Front/Back Covers, Toner Reduction, Poster Printing, Forced Hold Printing, Print Date, Scheduled Printing, Printing Using a Virtual Printer
Operating System	UFR II: Windows® 10/11/Server 2012/Server 2012 R2/Server 2016/Server 2019/Server 2022, MAC OS X (10.13 or later) PCL: Windows® 10/11/Server 2012/Server 2012 R2/Server 2016/Server 2019/Server 2022, MAC OS X (10.13 or later) PS: Windows® 10/11/Server 2012/Server 2012 R2/Server 2016/Server 2019/Server 2022, MAC OS X (10.13 or later) PPD: Windows® 10/11, MAC OS X (10.13 or later)

COPY SPECIFICATIONS

Copy Speed (BW and CL)	iR-ADV DX C3935i 1-sided: Up to 35 ppm (A4, A5, A5R, A6R), Up to 17 ppm (A3), Up to 23 ppm (A4R) iR-ADV DX C3930i 1-sided: Up to 30 ppm (A4, A5, A5R, A6R), Up to 15 ppm (A3), Up to 20 ppm (A4R) iR-ADV DX C3926i 1-sided: Up to 26 ppm (A4, A5, A5R, A6R), Up to 15 ppm (A3), Up to 20 ppm (A4R) iR-ADV DX C3922i 1-sided: Up to 22 ppm (A4, A5, A5R, A6R), Up to 15 ppm (A3), Up to 20 ppm (A4R)
First-Copy-Out Time (A4, BW/ CL)	iR-ADV DX C3935i: Approx. 5.5/7.4 seconds or less iR-ADV DX C3930i/C3926i/C3922i: Approx. 6.1/8.4 seconds or less
Copy resolution (dpi)	600 x 600
Multiple Copies	Up to 999 copies
Copy Density	Automatic or Manual (9 Levels)
Magnification	Variable zoom: 25% to 400% (1% Increments) Preset reduction/enlargement: 25%, 50%, 70%, 100%(1:1), 141%, 200%, 400%
Copy Features	Preset R/E Ratios by Area, Two-Sided, Density Adjustment, Original Type Selection, Interrupt Mode, Book to Two Pages, Two-sided Original, Job Build, N on 1, Add Cover, Insert Sheets, Different Size Originals, Page Numbering, Copy Set Numbering, Sharpness, Erase Frame, Secure Watermark, Print Date, Gutter, Print & Check, Negative/Positive, Repeat Images, Merge Job Blocks, Mirror Image, Store in Mail Box, Copy ID Card, Skip Blank Pages, Free Size Original, Color Mode, Reserved copy, Copy Sample

SCAN SPECIFICATIONS

Type	Standard: Color Platen Optional: Platen Cover-Y3, Single Pass DADF-C1* or DADF-BA1 [2-sided to 2-sided (Automatic with DADF)] * Detect Feeder Multi Sheet Feed is supported. DADF: Duplexing Automatic Document Feeder
Document Feeder Paper Capacity (80 gsm)	Single Pass DADF-C1: up to 200 Sheets DADF-BA1: up to 100 Sheets
Acceptable Originals and weights	Platen: Sheet, Book, and 3-Dimensional Objects Document Feeder media weight: Single Pass DADF-C1: 1-sided scanning: 38 to 220 gsm (BW, CL) 2-sided scanning: 38 to 220 gsm (BW, CL) *An acceptable weights of A6R or smaller is 50 to 220gsm. DADF-BA1: 1-sided scanning: 38 to 128 gsm (BW), 64 to 128 gsm (CL) 2-sided scanning: 50 to 128 gsm (BW), 64 to 128 gsm (CL)
Supported media sizes	Platen: max. scanning size: 297.0 x 431.8 mm Single Pass DADF-C1: A3, A4, A4R, A5, A5R, A6R, B4, B5, B5R, B6R, Custom size: 69.9 x 139.7 mm to 304.8 x 431.8 mm DADF-BA1: A3, A4, A4R, A5, A5R, B4, B5, B5R, B6, Custom size: 139.7 x 128 mm to 297.0 x 431.8 mm
Scan Speed (ipm: BW/CL,A4)	Single Pass DADF-C1: 1-sided Scanning: 135/135 (300 x 300 dpi, send), 80/80 (600 x 600 dpi, copy) 2-sided Scanning: 270/270 (300 x 300 dpi, send), 160/90 (600 x 600 dpi, copy) DADF-BA1: 1-sided Scanning: 70/70 (300 x 300 dpi, send), 51/51 (600 x 600 dpi, copy) 2-sided Scanning: 35/35 (300 x 300 dpi, send), 25.5/25.5 (600 x 600 dpi, copy)



TECHNICAL SPECIFICATIONS

imageRUNNER ADVANCE DX C3900 Series

Scan Resolution (dpi)	Scan for Copy: 600 x 600 Scan for Send: (Push) 600 x 600 (SMB/FTP/WebDAV/IFAX), (Pull) 600 x 600 Scan for Fax: 600 x 600	Network Security	TLS 1.3, IPsec, IEEE802.1X authentication, WPA3 support, SNMP V3.0, Firewall Functionality (IP/MAC Address Filtering), Dual Network Support (Wired LAN/Wireless LAN, Wired LAN/Wired LAN), Disabling Unused Functions (Enabling/Disabling Protocols/Applications, Enabling/Disabling Remote UI, Enabling/Disabling USB Interface), Communication Line Separation (G3 FAX, USB Port, Advanced Space, Scan and Send -Virus Concerns for E-mail Reception)
Pull Scan Specifications	Colour Network ScanGear2. For both TWAIN and WIA Supported OS : Windows*10/11/Server 2012/Server 2012 R2/Server 2016/Server 2019/Server 2022	Device Security	Protecting SSD Data [SSD Data Encryption (FIPS140-2/140-3)*, SSD Lock], Standard SSD Initialize, Trusted Platform Module (TPM 2.0), Job Log Conceal Function, Protecting MFP Software Integrity, Checking MFD Software Integrity & Platform Firmware Resiliency (NIST SP800-193) with Automatic System Recovery (Verify System at Startup, Runtime Intrusion Detection enabled with McAfee Embedded Control), HCD-PP Common Criteria Certification *Validation pending
Scan Method	Push Scan, Pull Scan, Scan to Box, Scan to Advanced Space, Scan to Network, Scan to USB Memory Key, Scan to Mobile device, Scan to cloud (uniFLOW Online - optional)	Device Management and Auditing	Administrator Password, Remote Management Two-factor Authentication, Digital Certificate And Key Management, Audit Log, Cooperating with External Security Audit System (Security Information and Event Management), Image Data Logging, Security Policy Setting
SEND SPECIFICATIONS		ENVIRONMENTAL SPECIFICATIONS	
Destination	Standard: E-mail/Internet FAX (SMTP), SMB 3.1.1, FTP, WebDAV, Mail Box Optional: Super G3 FAX, IP Fax	Operating Environment	Temperature: 10 to 30 °C Humidity: 20 to 80 % RH (Relative Humidity)
Address Book	LDAP (2,000)/Local (1,600)/Speed dial (200)	Power source	220-240V 50/60Hz 5A
Send resolution (dpi)	Push: up to 600 x 600 Pull: up to 600 x 600	Power consumption	Maximum: Approx. 1,500 W Copying (with DADF continuous scan): Approx. 613 W*1 Standby: Approx. 40.7 W*1 Sleep mode: Approx. 0.8 W*2 *1 Reference value: measured one unit *2 0.8 W sleep mode is not available in all circumstances due to certain settings.
Communication protocol	File: FTP (TCP/IP), SMB 3.1.1 (TCP/IP), WebDAV E-mail/I-Fax: SMTP, POP3	Power consumption	Typical Electricity Consumption (TEC)* : iR-ADV DX C3935i: 0.35 kWh iR-ADV DX C3930i: 0.30 kWh iR-ADV DX C3926i: 0.26 kWh iR-ADV DX C3922i: 0.23 kWh *As per USA Energy Star 3.0
File Format	Standard: TIFF, JPEG, PDF(Compact, Searchable, Apply policy, Optimize for Web, PDF/A-1b, Trace & Smooth, Encrypted, Device Signature, User Signature), XPS(Compact, Searchable, Device Signature, User Signature), Office Open XML (PowerPoint, Word)	Noise levels	For detailed information relating to Erp:Lot6/26 regulation, please go to: https://www.canon-europe.com/for_work/lot26/ Sound Power Level (LWA,m)* Active (BW)(I-sided) iR-ADV DX C3935i: 64 dB, Kv 3 dB iR-ADV DX C3930i: 60 dB, Kv 3 dB iR-ADV DX C3926i: 60 dB, Kv 3 dB iR-ADV DX C3922i: 60 dB, Kv 3 dB *Reference value: measured only one unit with ISO7779, described with ISO9296 (2017)
Universal Send Features	Original Type Selection, Two-sided Original, Book to Two Pages, Different-size Originals, Density Adjustment, Sharpness, Copy Ratio, Erase Frame, Job Build, Delayed Send, Preview, Job Done Notice, File Name, Subject/Message, Reply-to, E-mail Priority, TX Report, Original Content Orientation, Skip Blank Originals	Standards	Blue Angel
FAX SPECIFICATIONS		CONSUMABLES	
Maximum Number of Connection Lines	2	Toner Cartridges	C-EXV 64 Toner BK/C/M/Y
Modem Speed	Super G3: 33.6 kbps G3: 14.4 kbps	Toner Yield (Estimated @5% Coverage)	C-EXV 64 Toner BK: 38,000 pages C-EXV 64 Toner C/M/Y: 25,500 pages
Compression Method	MH, MR, MMR, JBIG	SOFTWARE AND PRINTER MANAGEMENT	
Resolution (dpi)	400 x 400 (Ultra Fine), 200 x 400 (Super Fine), 200 x 200 (Fine), 200 x 100 (Normal)	Tracking and reporting	Universal Login Manager (ULM) uniFLOW Online Express* *For more information, please refer to: uniFLOW Online Express uniFLOW Online
Sending and Receiving Size	Sending: A3, A4, A4R, A5*1, A5R*1, B4, B5*2, B5R*1 Receiving: A3, B4, A4, A4R, A5R , B5, B5R *1 Sent as A4 *2 Sent as B4 short	Remote management tools	iWEMC eMaintenance Content Delivery System
FAX memory	Up to 30,000 pages (2,000 jobs)	Scanning software	Color Network ScanGear 2
Speed dials	Max. 200	Optimisation tools	Canon Driver Configuration Tool
Group dials/destinations	Max. 199 dials	Platform	MEAP (Multifunctional Embedded Application Platform)
Sequential broadcast	Max. 256 addresses	Document Publishing	Kofax Power PDF Advanced (optional)
Memory backup	Yes	PAPER SUPPLY OPTIONS	
Fax Features	Sender's Name (TTI), Selecting the Telephone Line (when sending fax), Direct Send, Delayed Send, Preview, Job Done Notice, TX Report, Interrupt Transmission, Sequential Broadcasting, Password/Subaddress Sending, Confidential Mailbox, 2 on 1 Log	Cassette Feeding Unit-AWI	Paper Capacity: 550 sheets x 2 (1,100 sheets) (80 gsm) Paper Type: Thin, Plain, Recycled, Color, Heavy, Bond, Transparency, Pre-punched, Letterhead Paper Size: A3, A4, A4R, A5, A5R, A6R, B4, B5, B5R, Custom Size: 105.0 x 148.0 mm to 304.8 x 457.2 mm Paper Weight: 52 to 256 gsm Power Source: From the Main Unit Dimensions (W x D x H): 565 x 635 x 248 mm Weight: Approx. 16.0 kg
STORE SPECIFICATIONS			
Box (Number supported)	100 User Inboxes, 1 Memory RX Inbox, 50 Confidential Fax Inboxes Maximum 10,000 Pages (2,000 jobs) Stored		
Advanced Space	Communication Protocol: SMB or WebDAV Supported Client PC: Windows* 10/11 Concurrent Connections (Max.): SMB:64, WebDAV:3		
Advanced Space available disc space	Standard:16 GB (With option: max. 480GB)		
Advanced Space Features:	Authentication for Advanced Space Log-in, Sort Function, Printing a PDF File with a Password, imageWARE Secure Audit Manager Support, Search, File Preview, Authentication Management, Open to public, URI TX, Backup/Restore		
SECURITY SPECIFICATIONS			
Authentication and Access Control	User Authentication (Picture Login, Picture and PIN Login, Card Login*, Username and Password Login, Function Level Login, Mobile Login), Department ID Authentication (Department ID and PIN Login, Function Level Login), uniFLOW Online Express (PIN Login, Picture Login, Picture and PIN Login, Card Login, Card and PIN Login, Username and Password Login, Department ID and PIN Login, Function Level Login), Access Management System (Access Control) *Card readers are optional, please refer to Hardware Accessories Activation is required		
Document Security	Print Security (Secure Print, Encrypted Secure Print, Forced Hold Printing, uniFLOW Secure Print**), Receive Data Security (Confidential Fax Inbox Forwarding Received Documents Automatically), Scan Security (Encrypted PDF, Device Signature PDF/XPS, User Signature PDF/XPS, Adobe LiveCycle® Rights Management ES2.5 Integration), BOX Security (Mail Box Password Protected, Advanced Space Access Control), Send Data Security (Setting for requesting password input per transmission, Restricted E-mail/File send functions, Confirming FAX number, Allow/Restrict Fax Driver Transmissions, Allow/Restrict Sending from History, S/MIME Support), Document Tracking (Secure Watermark) ** Requires uniFLOW Online/uniFLOW		

TECHNICAL SPECIFICATIONS

imageRUNNER ADVANCE DX C3900 Series

OUTPUT OPTIONS*

Inner 2way Tray-M1

*Paper capacity may vary with different paper type/size.

Tray Capacity (with 80 gsm paper)
Upper tray: A4, A5, A5R, A6R, B5, B5R: 85 sheets
SRA3, A3, A4R, B4: 40 sheets
Lower tray (standard tray): A4, A5, A5R, A6R, B5, B5R:
up to 220 sheets
SRA3, A3, A4R, B4: up to 100 sheets
Paper Weight: 52 to 300 gsm
Dimensions (W x D x H): 428 x 405 x 88 mm
Weight: 0.7 kg

Copy Tray-T1

Capacity (with 80gsm paper):
A4, A5R, B5, B5R: 100 sheets
A3, A4R, B4: 65 sheets
Dimensions (W x D x H): 442 x 373 x 176 mm (attached to the main unit, when the extension tray is extended)
Weight: 0.5 kg

Inner Finisher-L1

Tray Capacity (with 80gsm paper):
Upper Tray: SRA3, A3, A4, A4R, A5, A5R, A6R, B4, B5, B5R: approx. 45 sheets
Lower Tray: A4, A5, A5R, B5: approx. 500 sheets
SRA3, A3, A4R, B4, B5R: 250 sheets
A6R: 30 sheets
Envelope: 10 sheets
Paper Weight: 52 to 300 gsm
Staple Position: Corner, Double
Staple Capacity:
A4, B5: 50 sheets (52 to 90 gsm)
A4R: 40 sheets (52 to 90 gsm)
A3, B4: 30 sheets (52 to 90 gsm)
Eco Staple:
A3, A4, B4, B5: 10 sheets (52 to 64 gsm)
8 sheets (65 to 81.4 gsm)
6 sheets (82 to 105 gsm)
Staple On Demand: approx. 40 sheets (80 gsm)
Dimensions (W x D x H): 727 x 525 x 225 mm (attached to the main unit, when the extension tray is extended)
Weight: Approx. 9.1 kg

Staple Finisher-AE1

Tray Capacity (with 80gsm paper):
Upper Tray: A4, A5, A5R, A6R, B5: approx. 250 sheets
SRA3, A3, A4R, B4, B5R: approx. 125 sheets
Lower Tray: A4, A5, A5R, B5: 3,000 sheets
SRA3, A3, A4R, B4, B5R: 1,500 sheets
A6R: 250 sheets
Envelope: Monarch 30 sheets, COM10 No.10, DL, ISO-C5: 100 sheets
Paper Weight:
Upper Tray: 52 to 256 gsm
Lower Tray: 52 to 300 gsm
Staple Position: Corner, Double
Staple Capacity: A4, B5: 50 sheets (52 to 90 gsm)
A4R: 40 sheets (52 to 90 gsm)
A3, B4: 30 sheets (52 to 90 gsm)
Eco Staple:
A3, A4: 10 sheets (52 to 64 gsm)
8 sheets (65 to 81.4 gsm)
6 sheets (82 to 105 gsm)
Staple On Demand: 50 sheets (52 to 90 gsm)
Dimensions (W x D x H): 637 x 623 x 1,021 mm (when the extension tray is extended)
Weight: Approx. 30.0 kg

Booklet Finisher-AE1

(Includes the above Staple Finisher-AE1 basic staple specifications.)
Saddle Stitch paper size: A3, A4R, B4
Saddle Stitch Staple Capacity: 20 sheets x 10 sets (52 to 81.4 gsm) (including 1 cover sheet up to 256 gsm)
Non Staple Folded Bunch Capacity: up to 3 sheets (52 to 105 gsm)
Power supply: From main unit
Dimensions (W x D x H): 637 x 623 x 1,021 mm (when the extension tray is extended)
Weight: Approx. 53.0 kg

Inner 2/4 Hole Puncher-D1

(Requires Inner Finisher-L1)
Two or Four Holes
Acceptable Punch Paper Weight: 52 to 300 gsm
Acceptable Punch Paper Size:
Two holes A3, A4, A4R, A5, B4, B5, B5R,
Four holes A3, A4

Inner 4 Hole Puncher-D1

(Requires Inner Finisher-L1)
Four Holes
Acceptable Punch Paper Weight: 52 to 300 gsm
Acceptable Punch Paper Size:
Four holes A3, A4, A4R, A5, B4, B5, B5R

2/4 Hole Puncher Unit-A1

(Requires either the Staple Finisher-AE1 or Booklet Finisher-AE1)
Two or Four Holes
Acceptable Punch Paper Weight: 52 to 300 gsm
Acceptable Punch Paper Size:
Two holes A3, A4, A4R, A5, B4, B5, B5R,
Four holes A3, A4

4 Hole Puncher Unit-A1

(Requires either the Staple Finisher-AE1 or Booklet Finisher-AE1)
Four Holes
Acceptable Punch Paper Weight: 52 to 300 gsm
Acceptable Punch Paper Size:
Four holes A3, A4, A4R, A5, B4, B5, B5R

HARDWARE ACCESSORIES

Card Readers

Copy Card Reader-F1
Copy Card Reader Attachment-B7
IC Card Reader Box for Numeric Keypad-A1

Others

Single Pass DADF-C1
DADF-BA1
Platen Cover-Y3
Utility Tray-B1
Numeric Keypad-A2
Instant Stapler-B1 (optional)
Media Adjustment Kit-A1

SECURITY OPTIONS

Data Security

1TB SSD-A1
Memory Mirroring Kit-A1
250GB SSD-A1 (usage with Memory Mirroring Kit-A1)

SYSTEM AND CONTROLLER OPTIONS

Print Accessories

PCL International Font Set-A

Barcode Printing

Barcode Printing Kit-D1

System Accessories

Copy Control Interface Kit-A1
Serial Interface Kit-K3
Wireless LAN Board-F1

Fax Accessories

Super G3 FAX Board-BH1
Super G3 2nd Line Fax Board-BH2
Remote Fax Kit-A1
IP FAX Expansion Kit-B1

OTHER OPTIONS

Accessibility Accessories

ADF Access Handle-A1
Voice Guidance Kit-G1
Voice Operation Kit-D1

Staple Cartridges

Staple Cartridge-Y1 (2 x 2,000pcs)*
* For Booklet Finisher only
Staple-P1 (2 x 5,000pcs)

Device Protection

Antimicrobial Film* - Various Sheets designed to fit the devices most common touch points.
*Application by a Service engineer is recommended

Software & Solutions



Certifications and compatibility



Canon Inc.
canon.com

Canon Europe
canon-europe.com

English edition

© Canon Europa N.V., 2023